

# Tłı̨cho, Dots'ats'eedı

(Tłı̨cho, share food among the people)



NATIONAL COLLABORATING CENTRE FOR  
INDIGENOUS HEALTH

PAUL CRESSMAN  
PROGRAM DEVELOPMENT OFFICER  
TŁĮCHO, NDEK'ÀOWO



# Disclaimer



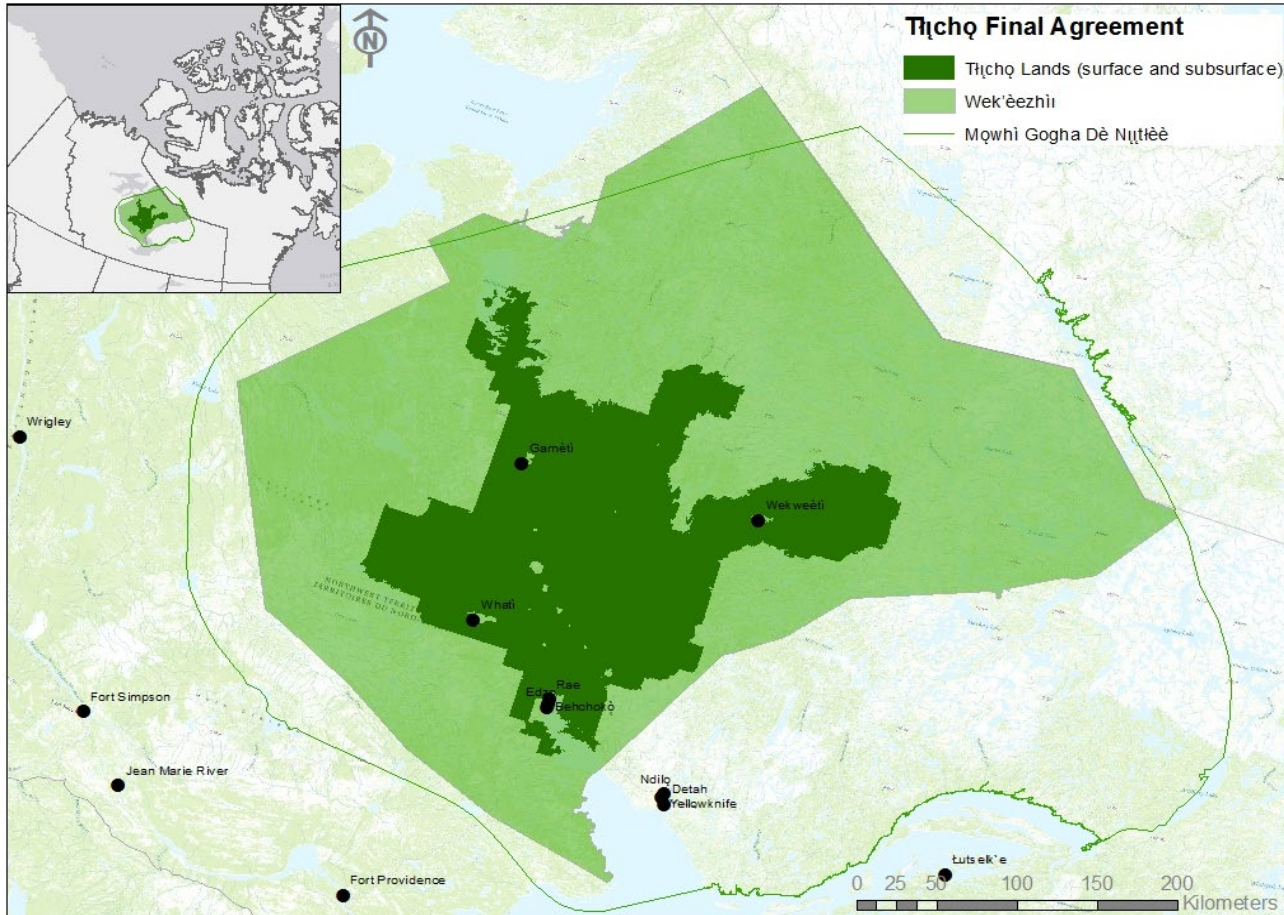
# Presentation Outline



- Tłı̨chǫ region
- Climate change impacts
- Tłı̨chǫ Doḡaàts'eedı
- Outcomes and Opportunities
- Questions



# Tłı̨chǫ Lands



This map is for illustrative purposes only. The actual boundaries of features depicted on this map may not be exactly as shown. Department of Aboriginal Affairs and Intergovernmental Relations is not responsible for any errors or discrepancies occurring on this map.

# Climate Change in the Tłı̨ch̨o Region



- Unusual weather patterns
- Invasive species
- Decline of ekwò (barren land caribou)

“The ekwò are a keystone species – they have shaped the cultural identity of the Tłı̨cho. Our history, our language, culture and way of life are joined with ekwò. We depend on them for food, clothing and equipment. They have been with us as far back as we can remember.”



-Tłı̨cho Grand Chief George Mackenzie

















# Tłı̨cho, Doḡaàts'eedı



- Pairs young adults with experienced harvesters
- As a team they fish, hunt, snare and gather
- Food is distributed by youth to community Elders







# Outcomes



- Participant driven measures of success
- Environmental monitoring
- Sustainable harvesting
- Skill development
- Cultural connection
- Improved health
- Food distribution









# Opportunities: the way forward



- Ongoing monitoring
- Data gathering and sharing to inform policy
- Food security
- Cultural resilience
- Community empowerment
- Reconciliation





# Masi Cho

